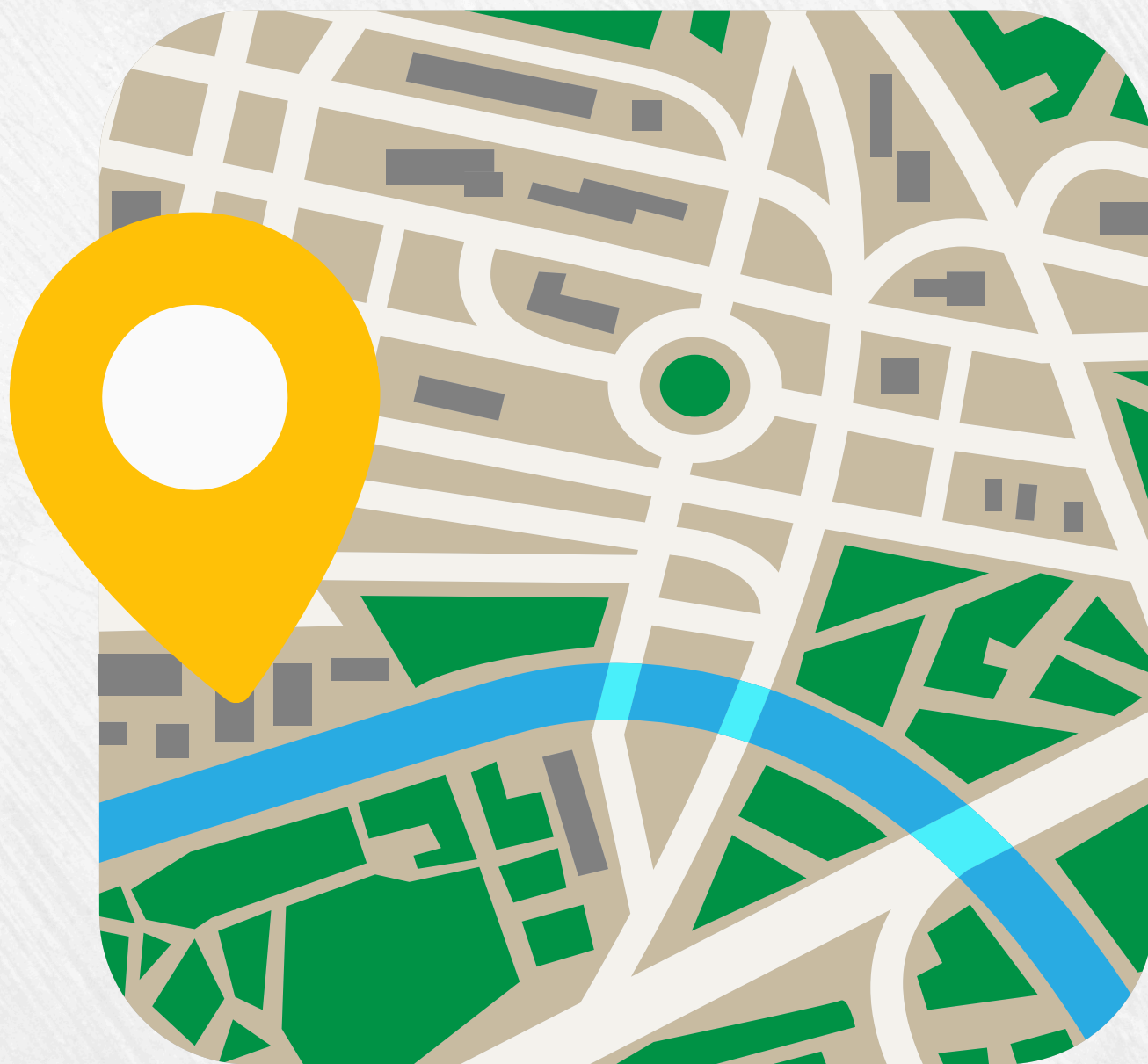


*Wondering where
to find us?*

**OUR BUILDING CAN
BE CONFUSING!**



1601 E 19th Ave Suite 4500

Swipe for directions!

Driving Directions

If walking, skip to slide 7

Parking at our building



Enter the garage from **20th** or **Gilpin** and park for **free**! Make sure to park on levels **P2** or **P1**.





Enter the garage,
proceed to **P2** or **P1**



Locate the
elevators, make
sure the door says
**"Medical
Office
Building"**



Proceed to the **4th** floor (NOT P4)



Make a right in the lobby area and walk to the end of the short hallway



At the end of this short hallway, make a right. You will see a long hallway.

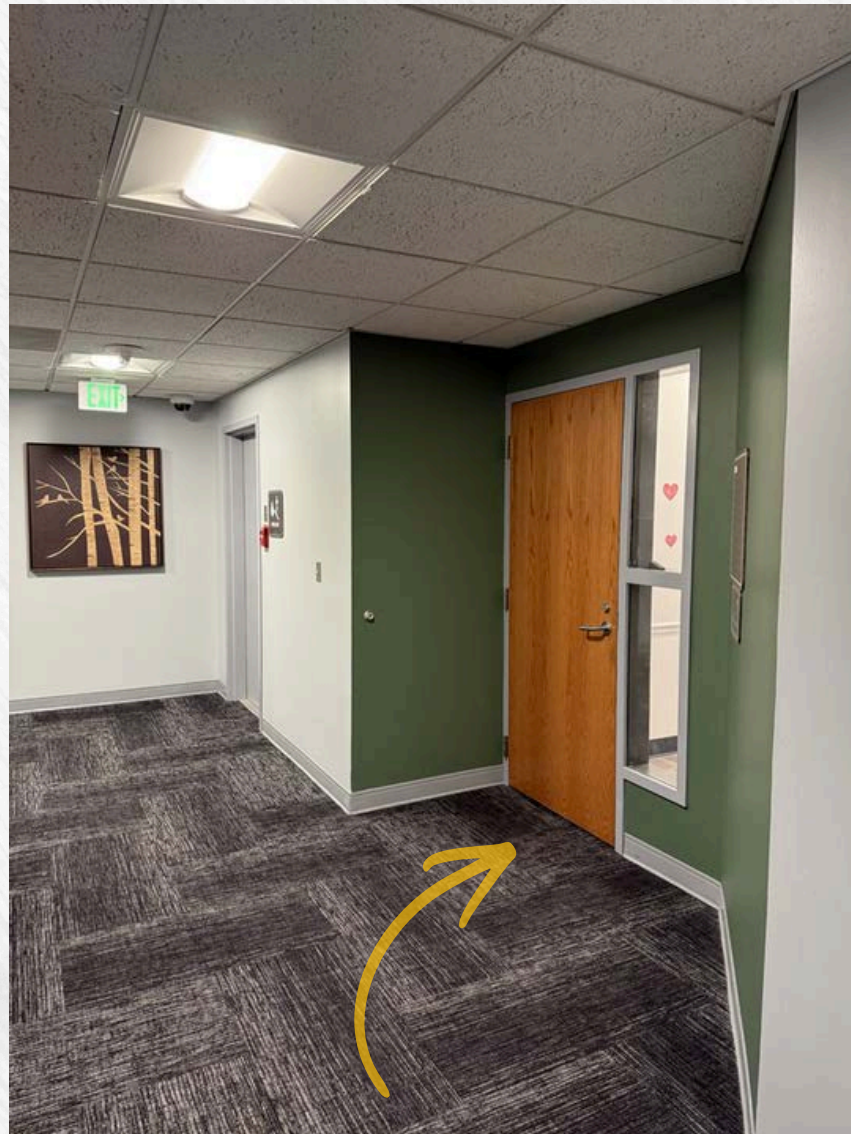


Proceed all the way to the end of the long hallway



We're the last door on the right!
Suite 4500

We look forward to working with you!

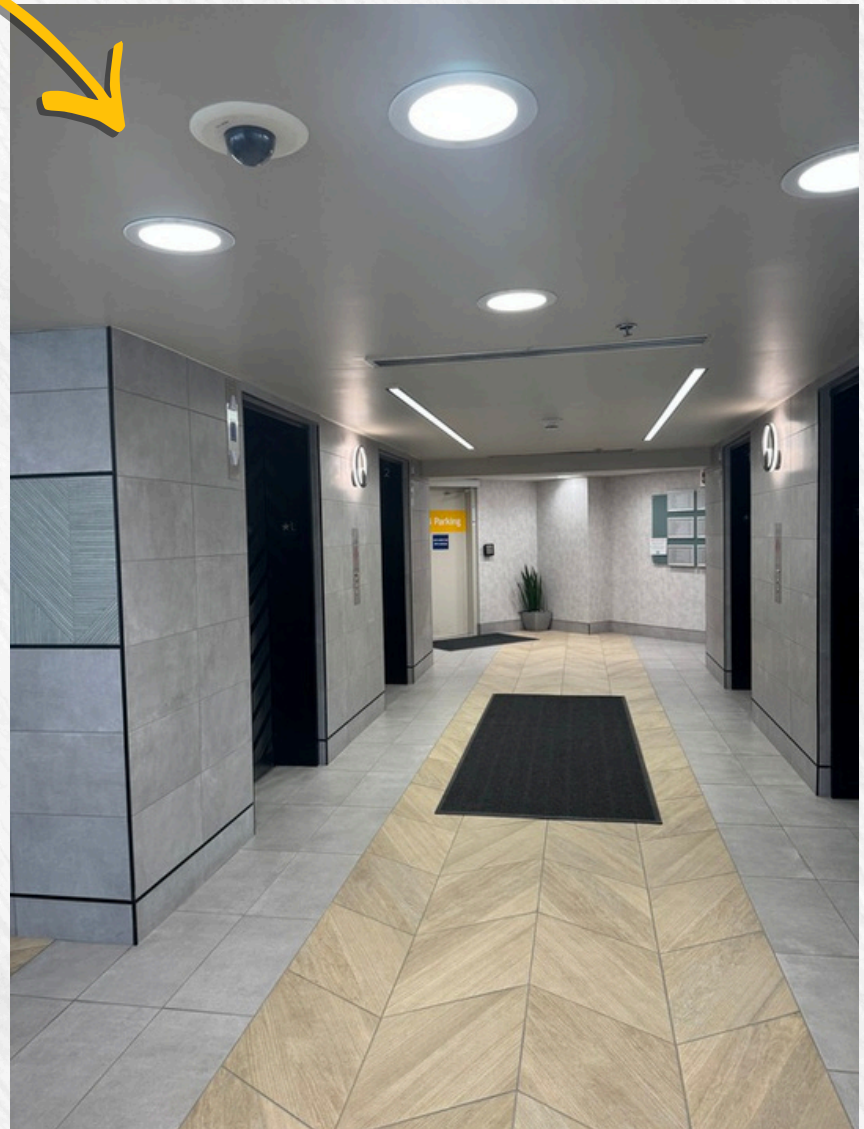


Walking Directions



Enter the lobby on foot here

Locate the elevators and proceed to the 4th floor (NOT P4)





Make a right in the lobby area and walk to the end of the short hallway



At the end of this short hallway, make a right. You will see a long hallway.



Proceed all the way to the end of the long hallway



We're the last door on the right!
Suite 4500

We look forward to working with you!

